



# THE MILLS

RESIDENCES

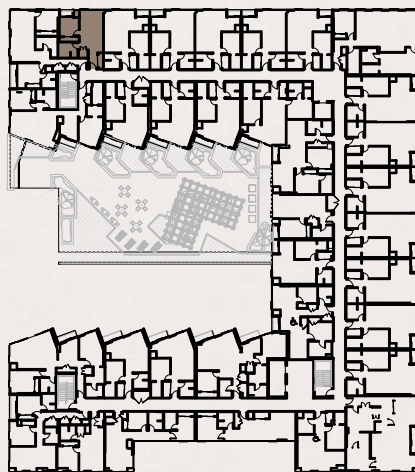
**1470 Queen Street**  
**1 Bedroom | 481 ft<sup>2</sup>**  
City View

- |                 |                 |
|-----------------|-----------------|
| 1. Kitchen:     | 11'-3" x 12'-3" |
| 2. Living Room: | 11'-3" x 8'-0"  |
| 3. Bedroom:     | 11'-2" x 8'-11" |
| 4. Bathroom:    | 8'-6" x 7'-4"   |
| 5. Laundry:     | 4'-2" x 3'-6"   |
| 6. Terrace:     | 5'-10" x 3'-0"  |

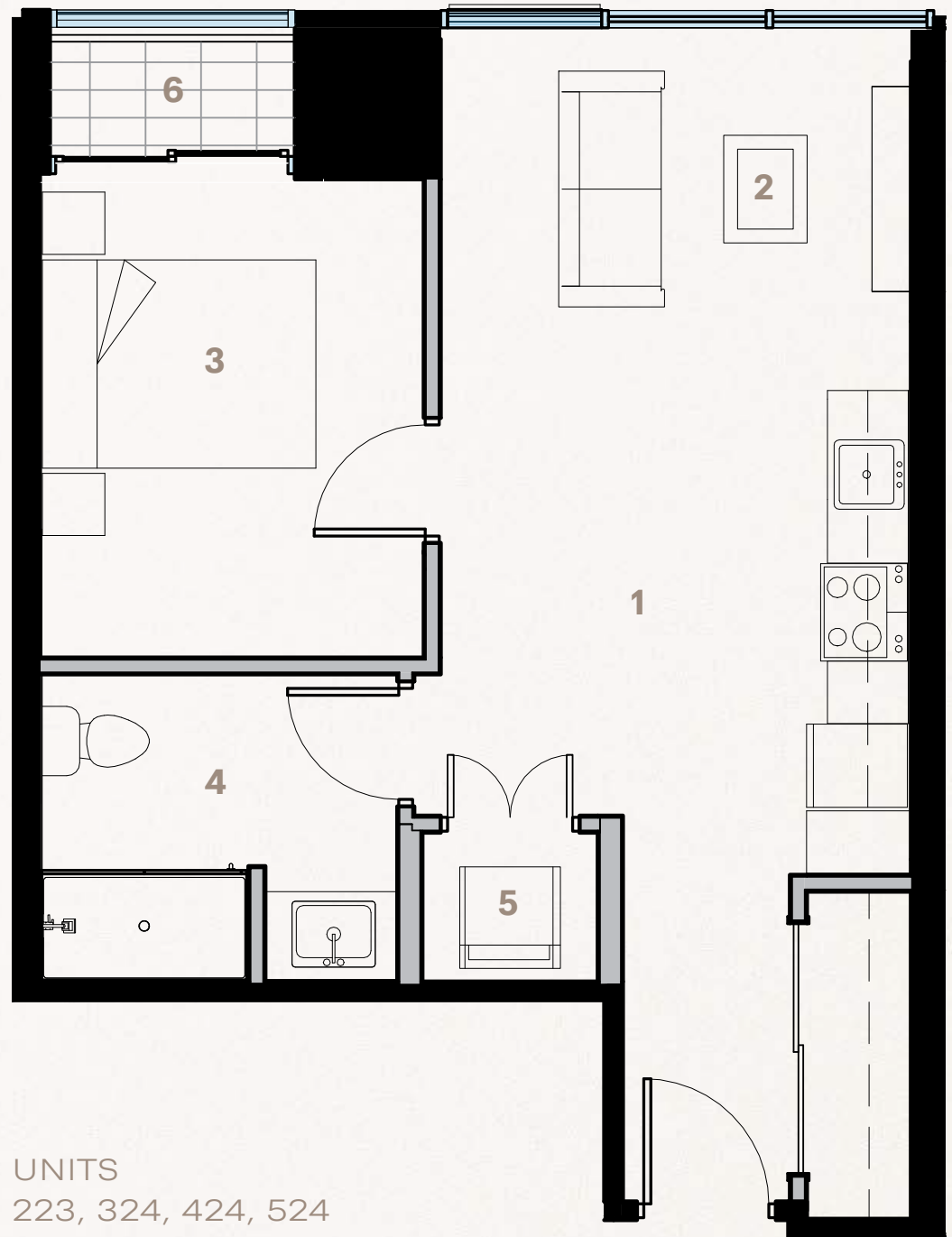
Spring Garden Road



Birmingham Street



Queen Street



UNITS  
223, 324, 424, 524



# THE MILLS

RESIDENCES

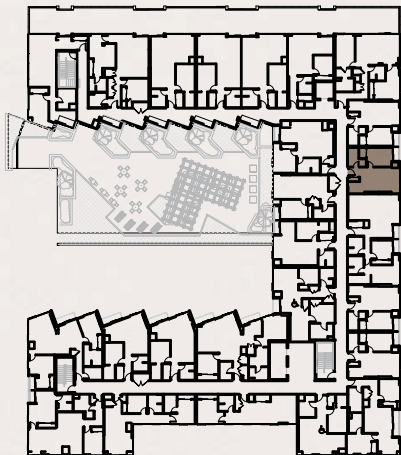
**1470 Queen Street**  
**1 Bedroom | 482 ft<sup>2</sup>**  
City View

- |                 |                 |
|-----------------|-----------------|
| 1. Kitchen:     | 5'-4" x 11'-3"  |
| 2. Living Room: | 11'-6" x 13'-0" |
| 3. Bedroom:     | 8'-11" x 11'-8" |
| 4. Laundry:     | 3'-6" x 3'-7"   |
| 5. Bathroom:    | 8'-11" x 5'-0"  |
| 6. Terrace:     | 6'-6" x 2'-7"   |

Spring Garden Road

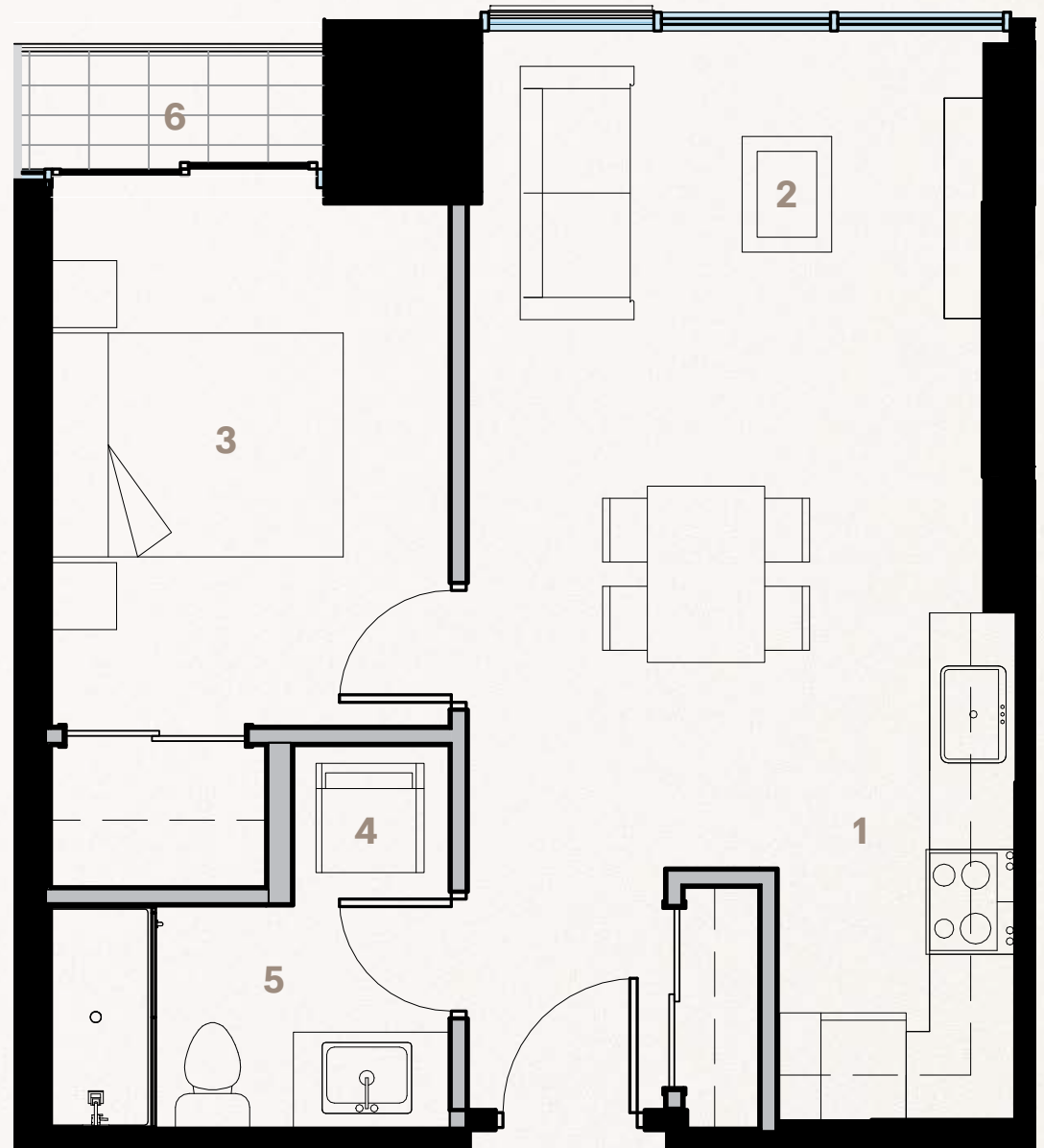


Birmingham Street



Queen Street

UNITS  
710  
711  
713  
714  
810  
811  
813





# THE MILLS

RESIDENCES

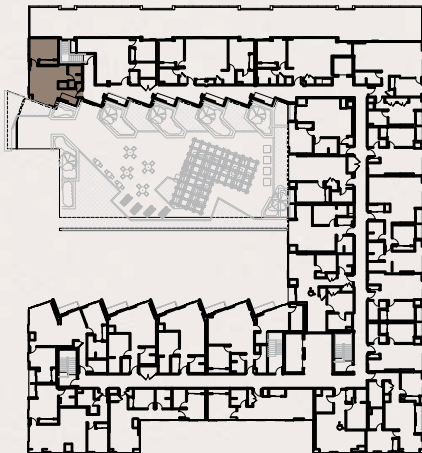
**1470 Queen Street**  
**1 Bedroom | 542 ft<sup>2</sup>**  
Courtyard | Terrace

- |                 |                 |
|-----------------|-----------------|
| 1. Bedroom:     | 12'-9" x 11'-9" |
| 2. Kitchen:     | 17'-0" x 6'-9"  |
| 3. Bathroom:    | 6'-1" x 7'-6"   |
| 4. Living Room: | 12'-8" x 11'-7" |
| 5. Laundry:     | 3'-0" x 2'-8"   |
| 6. Terrace:     | 18'-3" x 13'-6" |

Spring Garden Road



Birmingham Street



Queen Street

UNIT 818





# THE MILLS

RESIDENCES

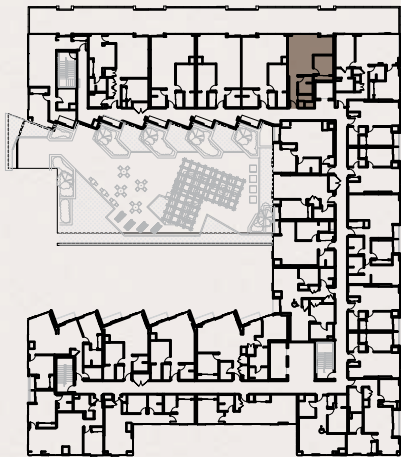
**1470 Queen Street**  
**1 Bedroom | 566 ft<sup>2</sup>**  
City View | Terrace

- |                 |                 |
|-----------------|-----------------|
| 1. Kitchen:     | 9'-4" x 15'-2"  |
| 2. Living Room: | 11'-6" x 8'-4"  |
| 3. Bedroom:     | 9'-4" x 9'-4"   |
| 4. Bathroom:    | 6'-10" x 8'-6"  |
| 5. Laundry:     | 6'-10" x 3'-0"  |
| 6. Terrace:     | 21'-3" x 12'-4" |

Spring Garden Road

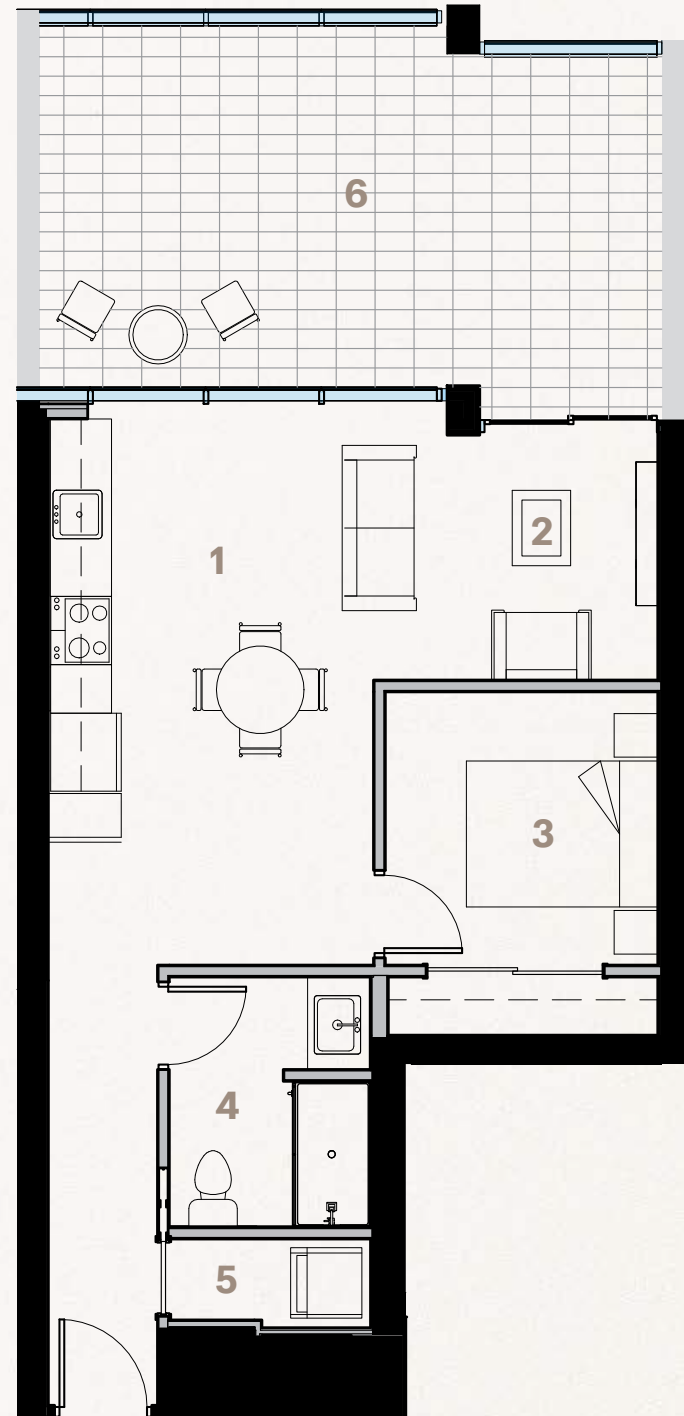


Birmingham Street



Queen Street

UNIT 716





# THE MILLS

RESIDENCES

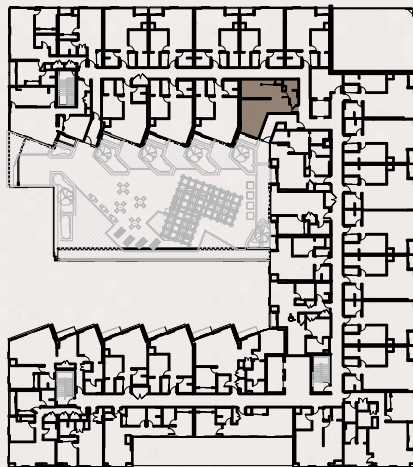
**1470 Queen Street**  
**1 Bedroom | 570 ft<sup>2</sup>**  
**Courtyard**

- |                 |                |
|-----------------|----------------|
| 1. Kitchen:     | 6'-7" x 14'-6" |
| 2. Living Room: | 9'-2" x 9'-9"  |
| 3. Bedroom:     | 9'-0" x 16'-4" |
| 4. Laundry:     | 3'-4" x 3'-0"  |
| 5. Bathroom:    | 8'-6" x 7'-3"  |
| 6. Terrace:     | 9'-4" x 3'-0"  |

Spring Garden Road



Birmingham Street



Queen Street

UNIT 229





# THE MILLS

RESIDENCES

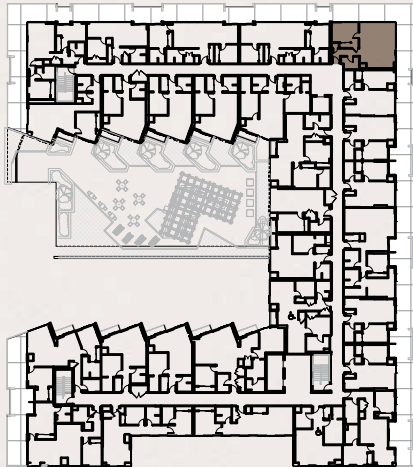
**1470 Queen Street**  
**1 Bedroom | 643 ft<sup>2</sup>**  
City View | Terrace

- |                 |                 |
|-----------------|-----------------|
| 1. Kitchen:     | 16'-10" x 9'-4" |
| 2. Living Room: | 17'-1" x 12'-6" |
| 3. Bedroom:     | 12'-10" x 9'-3" |
| 4. Laundry:     | 3'-2" x 3'-7"   |
| 5. Bathroom:    | 8'-6" x 6'-0"   |
| 6. Terrace:     | 40'-5" x 8'-6"  |
| 7. Terrace:     | 31'-0" x 9'-5"  |

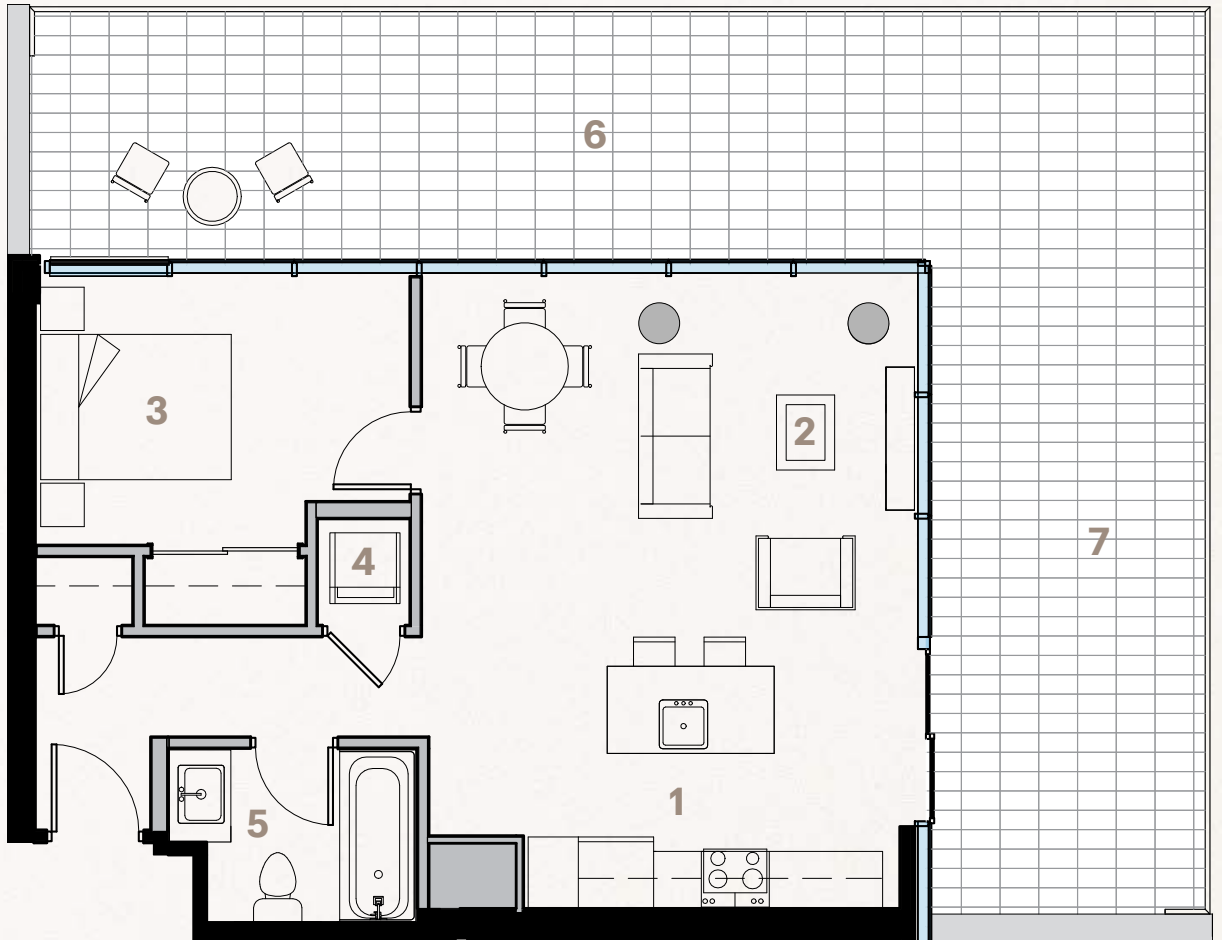
Spring Garden Road



Birmingham Street



Queen Street



UNIT 616



# THE MILLS

RESIDENCES

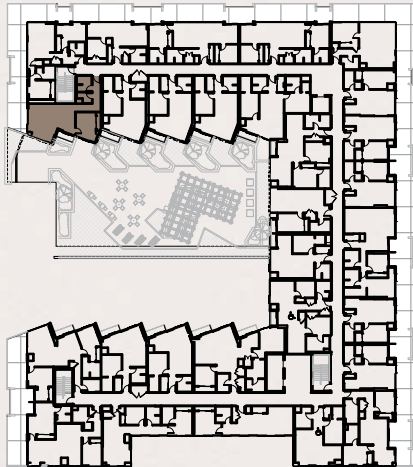
**1470 Queen Street**  
**1 Bedroom | 693 ft<sup>2</sup>**  
Courtyard | Terrace

- |                 |                 |
|-----------------|-----------------|
| 1. Kitchen:     | 14'-1" x 6'-0"  |
| 2. Living Room: | 22'-7" x 12'-0" |
| 3. Bedroom:     | 9'-6" x 14'-5"  |
| 4. Laundry:     | 7'-3" x 5'-1"   |
| 5. Bathroom:    | 7'-0" x 7'-6"   |
| 6. Terrace:     | 8'-5" x 3'-0"   |
| 7. Terrace:     | 12'-0" x 9'-7"  |

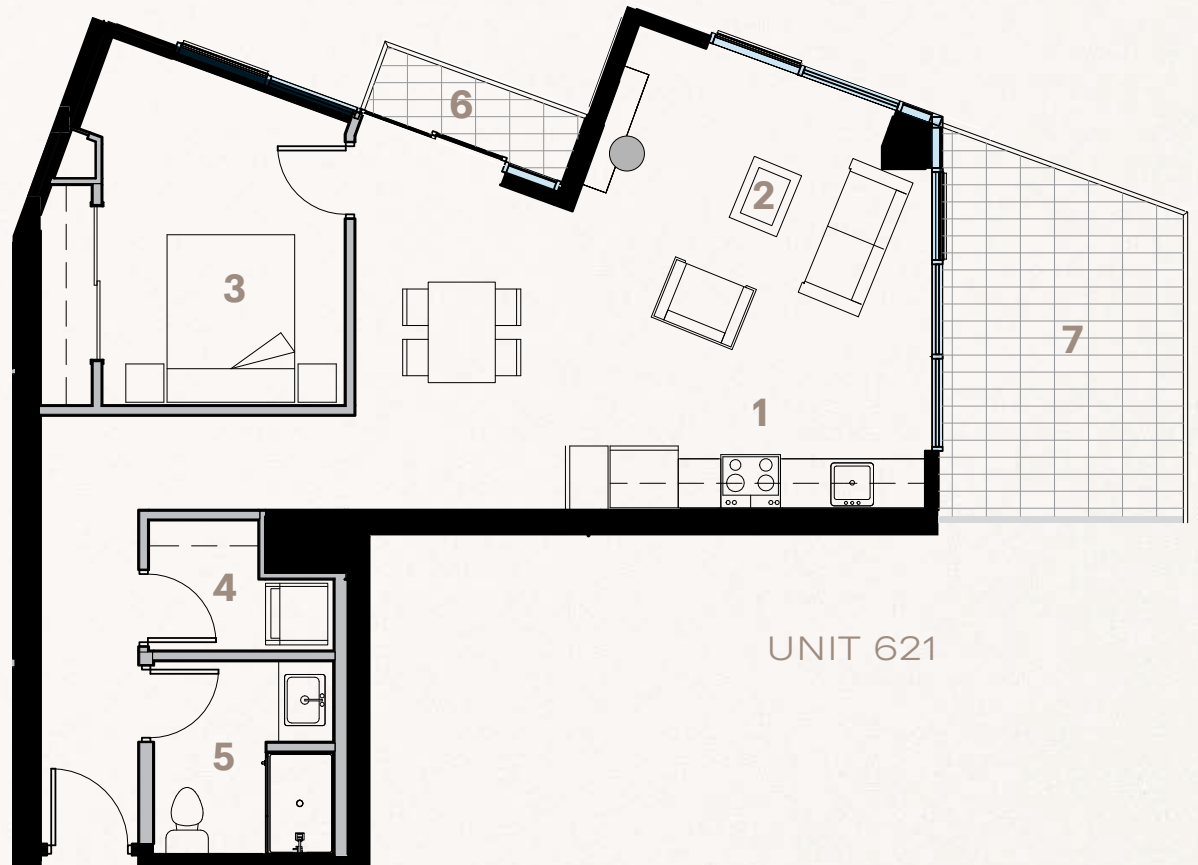
Spring Garden Road



Birmingham Street



Queen Street



UNIT 621



# THE MILLS

RESIDENCES

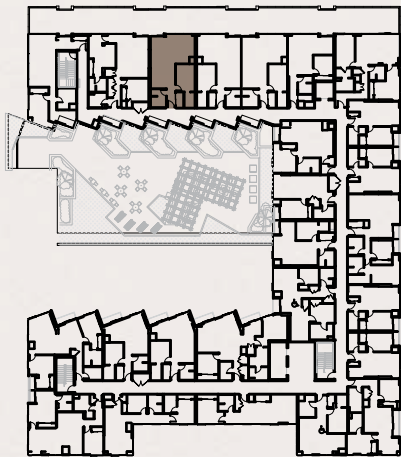
**1470 Queen Street**  
**1 Bedroom | 718 ft<sup>2</sup>**  
City View | Terrace

- 1. Kitchen: 11'-7" x 12'-3"
- 2. Living Room: 20'-10" x 13'-4"
- 3. Bedroom: 8'-11" x 12'-11"
- 4. Bathroom: 7'-3" x 8'-6"
- 5. Laundry: 3'-6" x 7'-3"
- 6. Walk-In Closet: 5'-0" x 7'-3"
- 7. Terrace: 22'-8" x 12'-4"

Spring Garden Road



Birmingham Street



Queen Street

UNITS  
717 - 719

